

BREEZE

Carlo Bartoli / 1995



Stacking armchair

Frame: high strength aluminum Ø 25mm available in anodized or powder coated finish.

Seat frame: powder coated die-cast aluminum

Seat and back: recyclable polypropylene

Spacers and feet: in high strength recyclable thermoplastic material.



Awards:

2004 / Italy - Selected for the "Coffee Design" collection by the Triennale di Milano Breeze sales reaches 1.000.000 units.

2000 / Italy - Selected for Commemorative Stamp Collection by the Italian Postal Service.

1996 / Germany - Vitra Design Museum.
Greece - Thessaloniki Design museum.
USA - I.D. Design Distinction Award
I.I.D.A. Apex Product Design Ward
Germany - High Design Quality Award
I.F. Industrie Forum Design Award
Red Dot Design Award from Design-Zentrum Nordrhein Westfalen.



	Article	Finish	Powder coated seat frame and frame	Powder coated seat frame/Satin 61 or polished 64 anodized aluminium frame	pcs / dimensions volume / gross weight product net weight
Armchair	S0466 S0466 E	Polypropylene Polypropylene for outdoor use			4 pcs / 59x62x98 cm 0,36 m3 / 20,5 Kg 4,3 Kg

Accessories

Ganging device in metal, powder coated aluminium 58 MGANBREEZE

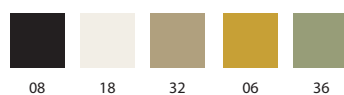
€ 48,00

Kart Universal trolley (art.C0514)

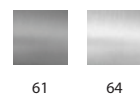
€ 575,00

Finishes

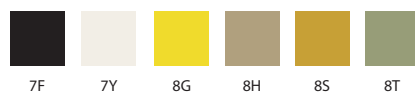
Powder coated aluminium frame



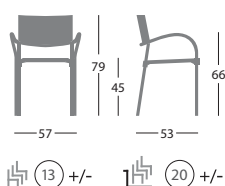
Anodized aluminium frame



Polypropylene



Dimensions



Fire-retardant version

Seat and back in fire retardant version
 black colour 7F

NOTE: fire retardant compounds may cause slightly difference of colours

Fire retardant certifications

Breeze meets Class 1 Standards by the Italian Minister of Interior.

Resistance tests

Mod. Breeze S0466
 UNI 5687/73 - seat frame durability to corrosion: 120 H.

Mod. Breeze S0466
 ANSI-BIFMA 5.1-1993/6 - back impact test
 ANSI-BIFMA 5.1-1993/9 - seat drop test
 ANSI-BIFMA 5.1-1993/12 - cyclic seat impact test
 ANSI-BIFMA 5.1-1993/13 - stability test
 ANSI-BIFMA 5.1-1993/14 - vertical arm strength test
 ANSI-BIFMA 5.1-1993/15 - horizontal arm strength test
 ANSI-BIFMA 5.1-1993/17 - back durability test
 ANSI-BIFMA 5.1-1993/19 - leg strength/front load test
 ANSI-BIFMA 5.1-1993/20 - leg strength/side load test
 UNI 8587-84 - back strength test
 UNI 9083-87 - cyclic fall-down test
 UNI 9088-87-84 - leg strength/side load test
 UNI 9089-87 - back impact test
 UNI 9089-87 - arm impact test
 UNI 8589-84 - vertical arm strength test
 UNI 8590-84 - horizontal arm strength test
 UNI 8584-84 - back durability test
 UNI 8585-84 - seat impact test
 UNI 8586-84 - cyclic seat impact test
 EN 1022/96 - stability test