

Armchair / Sofa

Internal metal frame and cold-injection polyurethane foam.

Fire retardant foam meets California Bulletin 117A, EN1021-1/2:2014 and Italian Class 1 IM Standards.

Special foam meeting the 5852 British Standards is available on request.

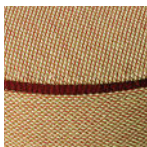
Legs in solid wood.

Covers: fabric, faux-leather, leather or C.O. M. (preferably in solid colours) with heavy duty Gros Grain welting

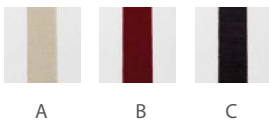


| | Article | Upholstery | Beech wood legs | pcs / dimensions volume / gross weight product net weight |
|-----------------------|---------|--|-----------------|---|
| Armchair Wood legs | I210 | Gazebo Xtreme Plus / Magnum / Rivet / Main Line Flax Blazer / Gingko / Step Melange / Silvertex / Remix3 Steelcut Trio3 / Atlas / Canvas2 Leather C.O.L. C.O. faux leather / C.O.M. (solid colour) | | 1 pc / 74x74x56 cm 0,31 m3 / 21 Kg 18,6 Kg |
| Sofa Wood legs | I211 | Gazebo Xtreme Plus / Magnum / Rivet / Main Line Flax Blazer / Gingko / Step Melange / Silvertex / Remix3 Steelcut Trio3 / Atlas / Canvas2 Leather C.O.L. C.O. faux leather / C.O.M. (solid colour) | | 1 pc / 139x74x57 cm 0,59 m3 / 39 Kg 32,3 Kg |

3 LOUNGE SEATING



Gros Grain colours

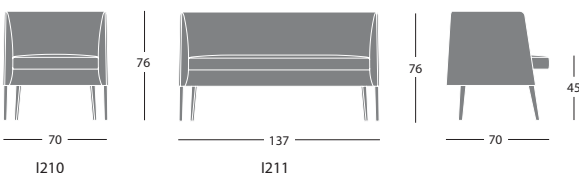


Finishes

Wood legs



Dimensions



Additional costs

Legs in Oak wood



RO 02 RO 03

Upholstery in two different materials
or two colours of the same material

Customer's own material

For customer's own material/leather, the form at the end of the price list shall apply, to be sent to Segis Spa with the Client's signature.

Art. I210 Solid fabric: for 1 pc 290 cm (H.140 cm)

C.O.L. qty: for 1 pc 4,20m²

Upholstery in two colours for 1 pc (H.140 cm): seat 80 cm / shell 210 cm

Art. I211 Solid fabric: for 1 pc 410 cm (H.140 cm)

C.O.L. qty: for 1 pc 6,20 m²

Upholstery in two colours for 1 pc (H.140 cm): seat 130 cm / shell 280 cm